



Tips tricks

Subsequent installation of fixed shelves with Clamex P-14 Flexus



Do you want to install a fixed shelf or a dividing panel in a cabinet that has already been fitted on a customer's site? Thanks to the Clamex P-14 Flexus, you can do so quickly and easily.

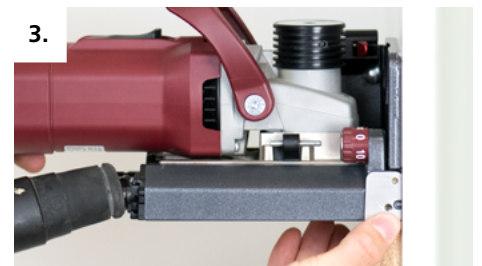
How it works:



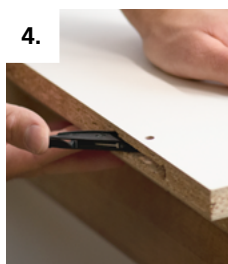
1. Mill P-System grooves in the shelves and move the centre position to the workpiece. Drill an access opening



2. Mark the milling axis from the shelf to the desired position on the sides of the cabinet



3. Align the Zeta P2 to the marking and mill grooves into the sides of the cabinet



4. Insert the connector halves



5. Move the shelf down from above until the positioning pins lock into place in the counterpart



6. Tighten the Clamex P-14 Flexus

Clamex P-14 Flexus

P-System

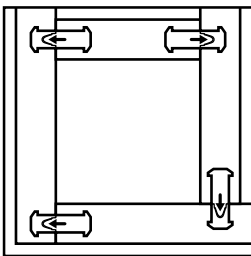

Detachable furniture connector
 with flexible positioning pins

NEW

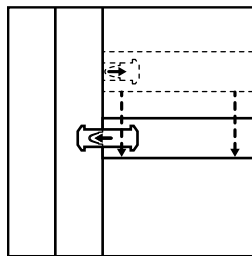


Advantages

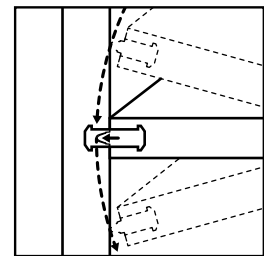
Flexible assembly sequence



Simple alignment

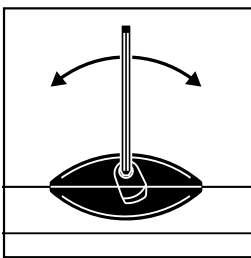


Versatile assembly

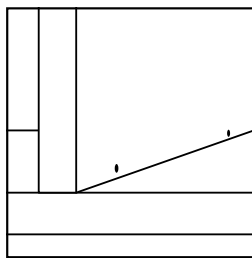


All advantages of the Clamex P also apply to the Clamex P-14 Flexus!

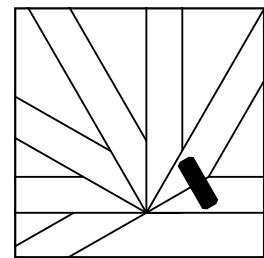
Detachable







Aesthetic



Versatile



Articles Clamex P-14 Flexus

Pairs	Art. No.	Pairs	Art. No.	Pairs	Art. No.	Units	Art. No.
80 x 	145315	300 x 	145316	1000 x 	145317	2000 x 	145318



Manufacturer:
Lamello AG
 Joining technology
 Hauptstrasse 149
 CH-4416 Bubendorf
 Tel. +41 61 935 36 36
 Fax +41 61 935 36 06
 info@lamello.com
 www.lamello.com